



NYS 4th Grade Science Exam

March 5th, 2019

Presenter: Len Pizza

Structure of Exam

Performance Assessment (3 Stations)

1. Measurement
2. Electricity & Magnetism
3. Kinetic Energy and Force

Written Assessments (2 Parts)

1. 30 Multiple Choice Questions
2. 12-15 Short Answer Questions



Testing Dates

Performance Assessment

- Wednesday, May 22nd – Friday, May 31st (One Day Only)

Written Assessment

- Monday, June 3rd (One Day Only)
- Make-up Assessment, June 4th – June 7th



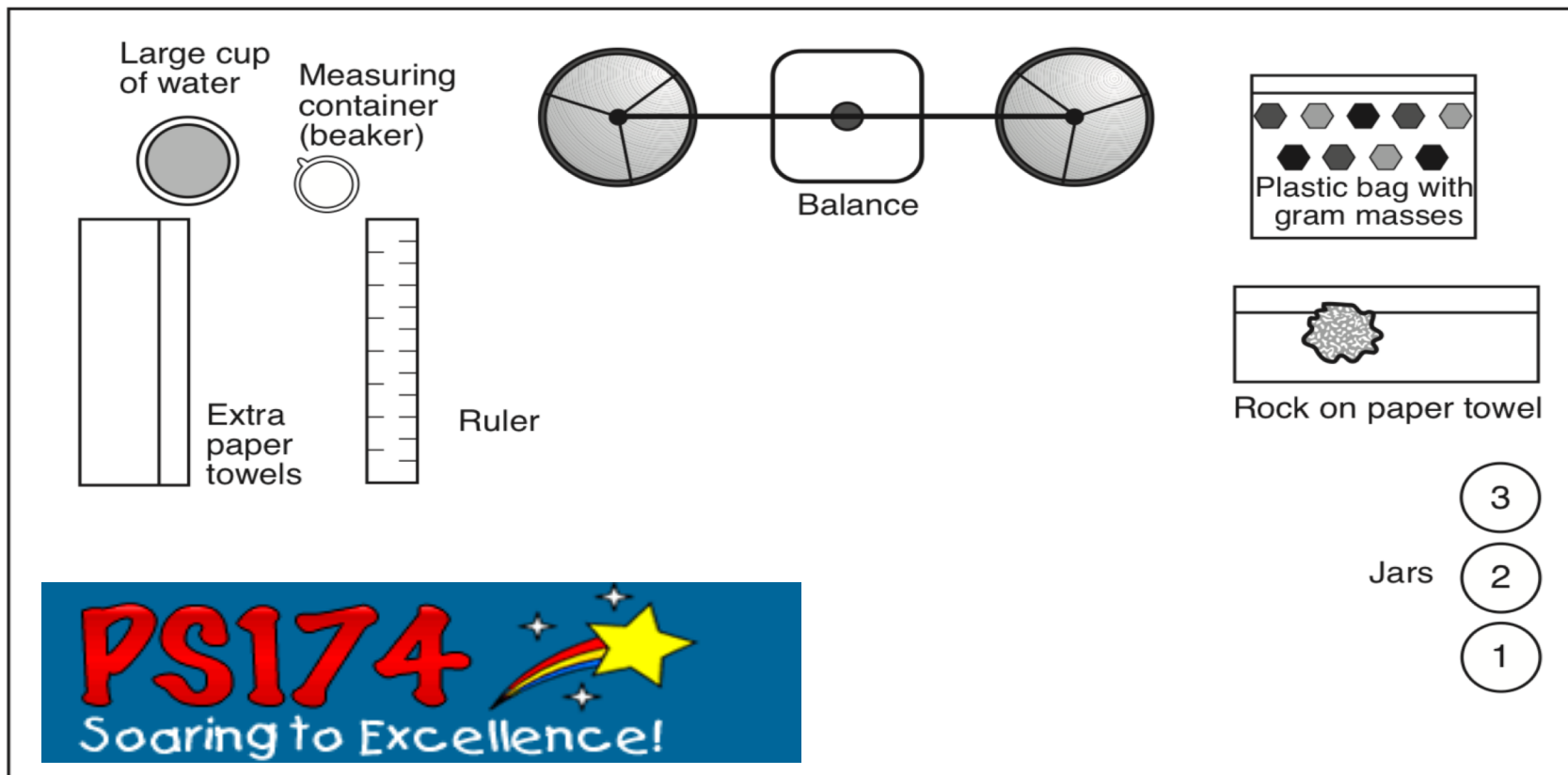
Performance Assessment

- The performance assessment consists of 3 hands-on scientific investigations/tasks that will check the students ability to measure, test, estimate and predict using scientific reasoning and their knowledge of scientific concepts.
- Each student will work alone and is responsible to complete all 3 stations.
- Students are provided a total of one hour to finish all 3 stations.



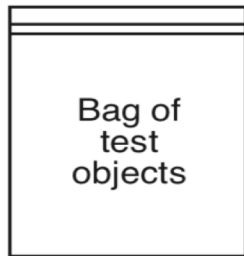
Performance Task 1

Station Diagram Station 1 — Measuring Objects and Liquids

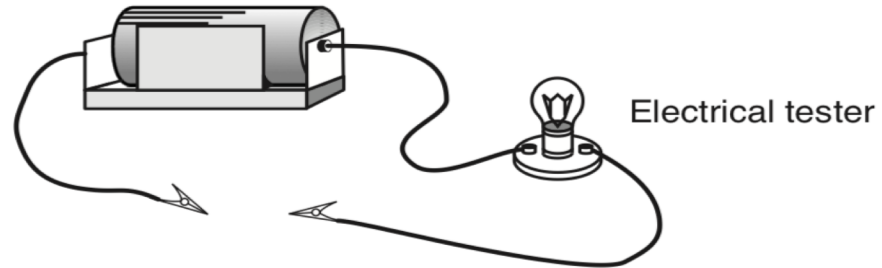


Performance Task 2

Station Diagram Station 2 — Electrical and Magnetic Testing



Bag of test objects



Bag of test objects contains penny, nickel, paper clip, aluminum foil, rubber band, plastic spoon, wooden stick, and colored disk.



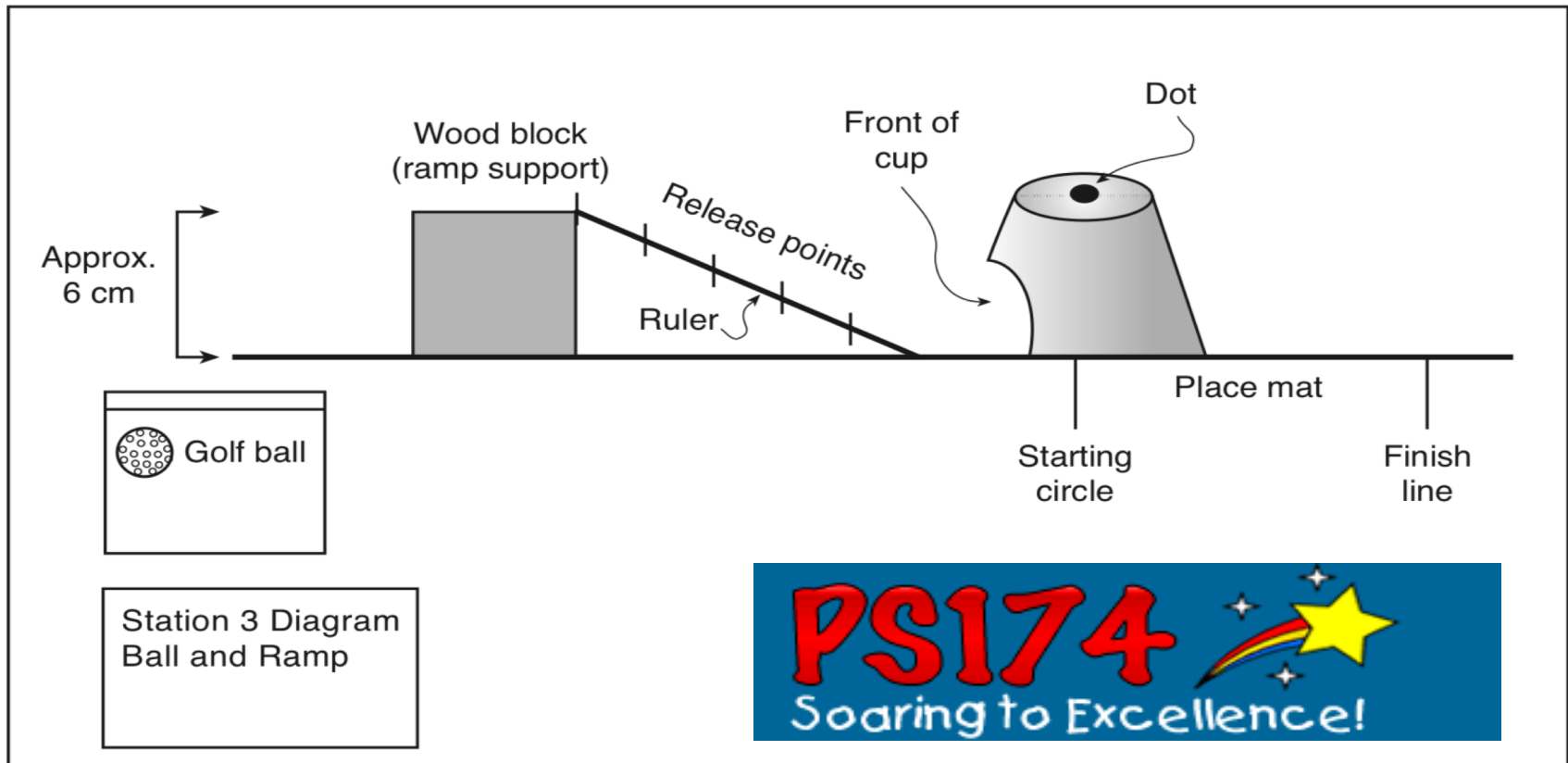
Bar magnet

Station 2 Diagram
Electrical and
Magnetic Testing



Performance Task 3

Station Diagram Station 3 — Ball and Ramp



Written Assessment

- The written assessment consists of 30 multiple choice questions and 12-15 short answer questions. Students will apply their knowledge of scientific concepts, formulate hypotheses and make predictions.
- No time limit for the written assessment.



Multiple Choice Question

During which season of the year would a rabbit's fur be thickest?

- A fall
- B spring
- C summer
- D winter

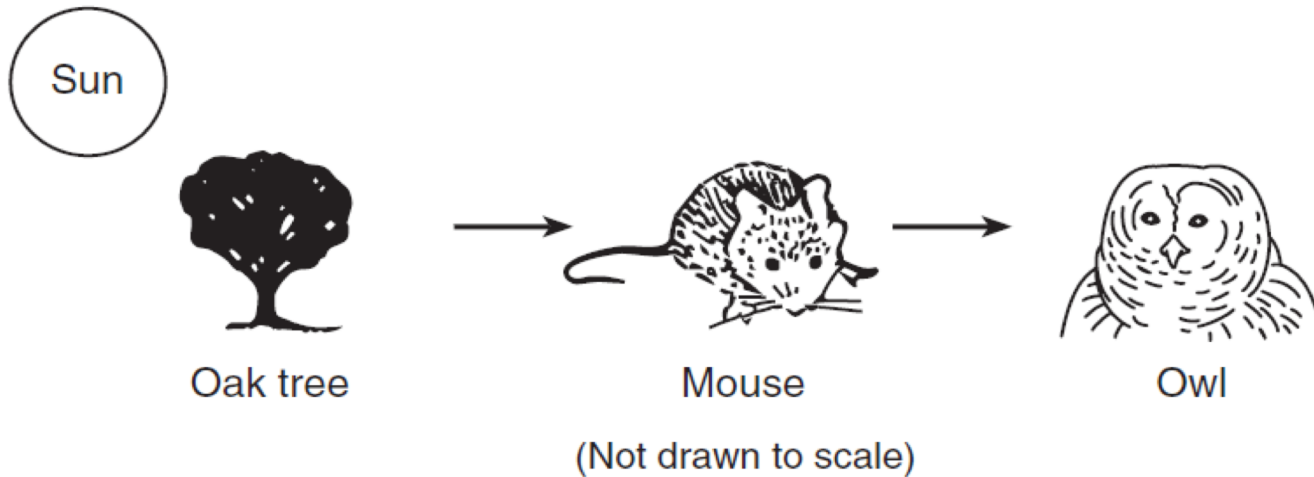


Multiple Choice Question

- 4 When the food supply in an area *decreases*, many of the deer living there will
- A move to a new habitat
 - B change their color
 - C hibernate
 - D reproduce



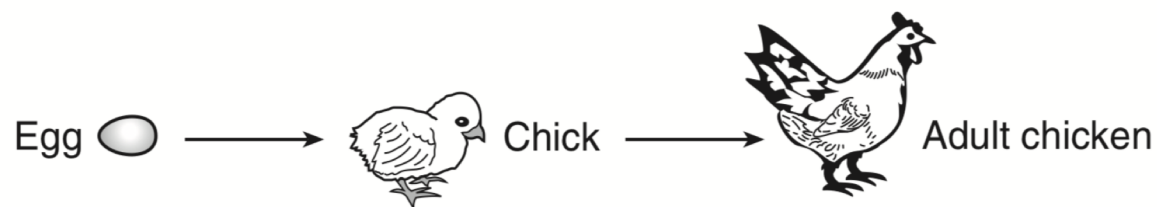
Short Answer Example



Which organism in this food chain uses the Sun's energy to produce food?

Short Answer Example

35 The diagram below shows three stages in the life of a chicken.



(Not drawn to scale)

Describe **one** way that the chick's body changes as it develops into an adult. [1]

Exam Preparation

- Students receive a quality science education here at P.S. 174 from kindergarten through 5th grade. The classroom teachers are utilizing text books and workbooks. In addition, the students have access to a vast amount non-fiction resources in the classroom library.
- Students are receiving a STEM education which provides them with a rich, more in depth, hands-on approach to learning science.



Exam Preparation

- Students and parents can access years of past exams that have been given by NYS at:

<http://www.nysedregents.org/Grade4/Science/home.html> .

Students will become familiar with the structure of the test and gain practice answering questions.

- The following is an interactive online application that presents past science exam questions in a game show format. Many students really seem to enjoy this approach to test prep.

http://www.quia.com/rr/66818.html?AP_rand=2048183830



Additional Resources

- [Barron's New York State Grade 4 Elementary-Level Science Test](#) by Joyce Thornton Barry and Kathleen Cahill

